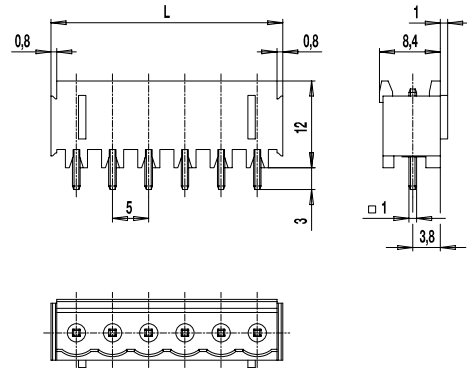
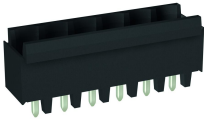
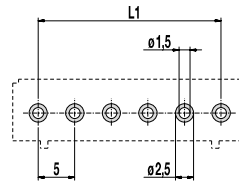


120-M-221-THR

Pin strip for THR
 Plug-in direction vertical to PCB, with side walls



PCB LAYOUT



$L1 = (\text{No. of poles} - 1) \times \text{pitch}$
 Solder paste thickness: 0,15 - 0,2 mm
 Solder pad diameter: ϕ 2,5 mm

GENERAL INFORMATION

Pitch	5 mm
No. of poles	2 - 12
Usable with	all plug connectors of series 120
Additional Information	For the automatic assembling process, all pin strip versions are packed Tape-on-Reel and are equipped with high temperature resistant Pick Caps, which can comfortably be removed after the soldering process.

TECHNICAL DATA

Overvoltage Category	III	III	II
Pollution Severity Level	3	2	2
Rated Voltage	250 V	320 V	630 V
Rated Impulse Voltage	4 kV	4 kV	4 kV
Rated Insulation Voltage	250 V acc. to EN 60998-1		
Rated Current	12 A		
Soldering process	Wave solder & reflow solder		
Hole in PCB	ϕ 1,5 mm		
PCB thickness	Wave solder max. 1,6 mm; reflow solder 1,6 - 3,2 mm		

APPROVALS

	Current [A]	Voltage [V]	Group	AWG	[Nm]
	15	300	B		
	10	300	D		
	15	300	B		
	10	300	D, E		

MATERIAL

Moulding	PA HT, black, V-0
Comparative Tracking Index	CTI \geq 600
Insulating Group	I
Temperature Range	-40°C up to 120°C; reflow solder temperature peak max. 255°C acc. to DIN EN 61760-1
Solder pin	1,0 x 1,0 mm; tin plated brass

OPTIONS / ACCESSORIES

- Consecutive numbering
- Special marking according to drawing
- Self-adhesive marking strip BST-5,00 [1]

[1] To be fitted after reflow soldering process

CONFIGURATIONS

Poles	Part number	Article number	Length (L)	Packaging	PU	Tape Width	Tape Height
2	120-M-221-THR/02	20.806.352	12,00 mm	Box	200		
3	120-M-221-THR/03	20.806.353	17,00 mm	Box	200		
4	120-M-221-THR/04	20.806.354	22,00 mm	Box	100		
6	120-M-221-THR/06	20.806.356	32,00 mm	Box	100		
2	120-M-221-THR/02-T&R	20.806.352.A00	12,00 mm	Tape-on-Reel	225	32 mm	17,4 mm
3	120-M-221-THR/03-T&R	20.806.353.A00	17,00 mm	Tape-on-Reel	225	32 mm	17,4 mm
4	120-M-221-THR/04-T&R	20.806.354.A00	22,00 mm	Tape-on-Reel	225	56 mm	17,4 mm
5	120-M-221-THR/05-T&R	20.806.355.A00	27,00 mm	Tape-on-Reel	225	56 mm	17,4 mm
6	120-M-221-THR/06-T&R	20.806.356.A00	32,00 mm	Tape-on-Reel	225	56 mm	17,4 mm

further number of poles on request

